

CROSS OVER PLATES WITH TUBE SUPPORT LUGS

This cross over plate incorporates tube location lugs to support horizontal & cross members on assemblies such as face frames.

Bespoke units can be fabricated to suit individual parent leg sizes.

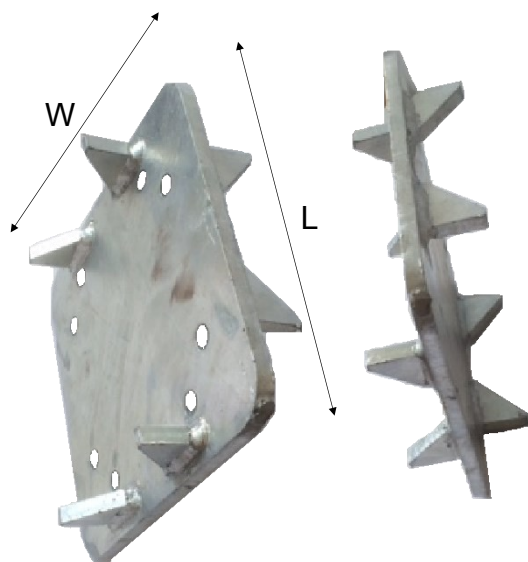
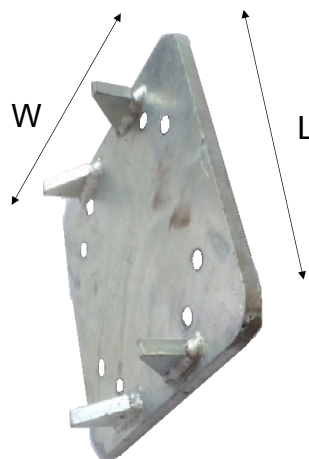
Material 10mm S355J2 BS EN 10025-2

Galvanized to BS ENISO 1461

Use 12mm Fixings

4 Lugs or 8 Lugs

Part No.	Tube \varnothing	Length	Width	Wt Kg
3/COP/30L30	76.1	225	225	4.2
3/COP/30L40	76.1	225	225	4.2
3/COP/30L50	76.1	225	225	4.4
3/COP/40L40	88.9	225	225	4.2
3/COP/40L50	88.9	250	225	4.7
3/COP/50L50	114.3	250	250	5.2



Part No.	Tube \varnothing	Tube \varnothing	Length	Width	Wt Kg
3/COP/30L30L	76.1	76.1	225	225	4.5
3/COP/30L40L	76.1	88.9	225	225	4.5
3/COP/30L50L	76.1	114.3	225	225	4.7
3/COP/40L40L	88.9	88.9	225	225	4.5
3/COP/40L50L	88.9	114.3	250	225	4.9
3/COP/50L50L	114.3	114.3	250	250	5.5