

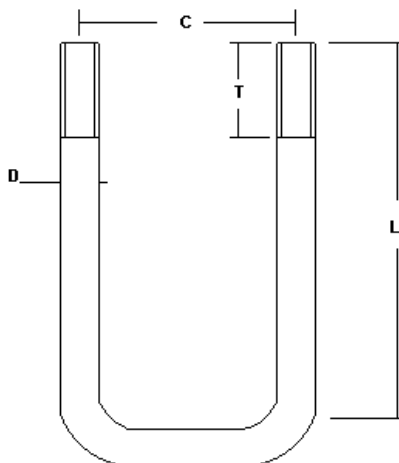
UNEQUAL SQUARE BOLT M12

MS = Mild Steel Bolt Grade 43A

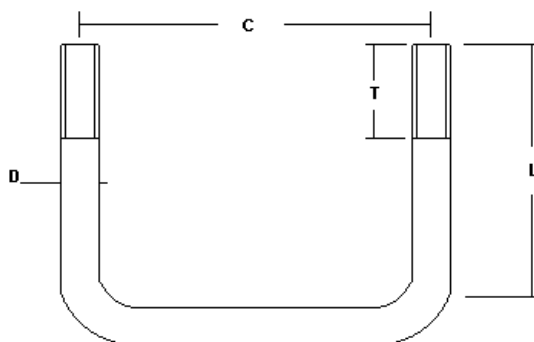
HT = High Tensile Bolt Grade EN16T

Finish = Spun Galvanised to BS 7371

Each Supplied with 4 Full Nuts, 2 Flat Washers and 2 Spring Washers



Part No MS	Part No HT	C	L	D	T	Size	Series
-	2/SQB/12/102/051	67	160	12	50	102 X 51	1000
-	2/SQB/12/127/064	80	185	12	50	127 X 64	1000
2/SQB/113	2/SQB/12/152/076	91	202	12	50	152 X 76	2000
2/SQB/115	2/SQB/12/203/076	91	253	12	50	203 X 76	2000



Part No MS	Part No HT	C	L	D	T	Size	Series
-	2/SQB/12/064/127	142	122	12	50	64 X 127	2000
2/SQB/111	2/SQB/12/051/102	118	109	12	50	51 X 102	2000
-	2/SQB/12/076/152	167	125	12	50	76 X 152	3000
2/SQB/116	2/SQB/12/076/203	218	125	12	50	76 X 203	3000
-	2/SQB/12/090/150	165	140	12	50	90 X 150	3000