

Cable Tray Heavy Duty

Galvanized to BS ENISO 1461:1999

Type A trays are designed to carry heavier cables with less support than a standard tray. The depth of flange is 50mm with a return of 32mm means easier alignment when joined and adds greatly to the overall strength of the installation.

Type B trays are 25mm in depth with an 8mm return.

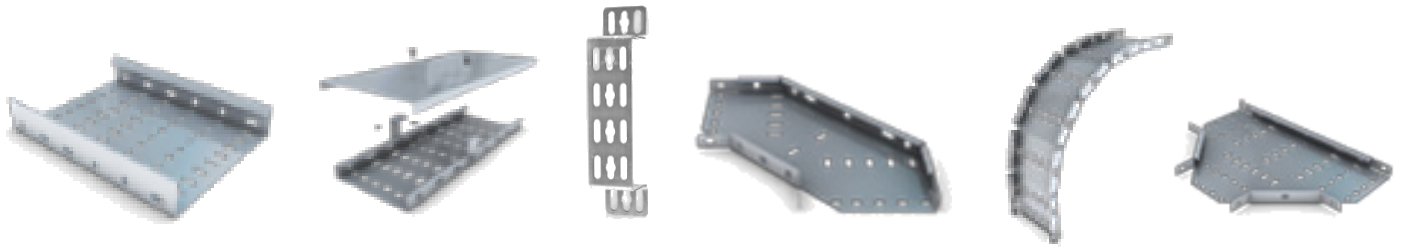
To order couplers c/w fixings bolts request:

4/CTY/013 Type A

4/CTY/014 Type B

For ventilated covers change part number suffix from C to VC. Standard cover depth 22mm

Standard tray length 3 metres



Part No.	Width	Depth	Cover	Top Hat Bkt	90° Flat Bend	90° Inside Riser	90° Outside Riser	Equal Tee
2/CTY/001	150	50	2/CTY/001/C	2/CTY/001/THB	2/CTY/001/FB	2/CTY/001/IR	2/CTY/001/OR	2/CTY/001/ET
2/CTY/002	225	50	2/CTY/002/C	2/CTY/002/THB	2/CTY/002/FB	2/CTY/002/IR	2/CTY/002/OR	2/CTY/002/ET
2/CTY/003	300	50	2/CTY/003/C	2/CTY/003/THB	2/CTY/003/FB	2/CTY/003/IR	2/CTY/003/OR	2/CTY/003/ET
2/CTY/004	450	50	2/CTY/004/C	2/CTY/004/THB	2/CTY/004/FB	2/CTY/004/IR	2/CTY/004/OR	2/CTY/004/ET
2/CTY/005	600	50	2/CTY/005/C	2/CTY/005/THB	2/CTY/005/FB	2/CTY/005/IR	2/CTY/005/OR	2/CTY/005/ET
2/CTY/006	700	50	2/CTY/006/C	2/CTY/006/THB	2/CTY/006/FB	2/CTY/006/IR	2/CTY/006/OR	2/CTY/006/ET
2/CTY/007	100	25	2/CTY/007/C	2/CTY/007/THB	2/CTY/007/FB	2/CTY/007/IR	2/CTY/007/OR	2/CTY/007/ET
2/CTY/008	150	25	2/CTY/008/C	2/CTY/008/THB	2/CTY/008/FB	2/CTY/008/IR	2/CTY/008/OR	2/CTY/008/ET
2/CTY/009	225	25	2/CTY/009/C	2/CTY/009/THB	2/CTY/009/FB	2/CTY/009/IR	2/CTY/009/OR	2/CTY/009/ET
2/CTY/010	300	25	2/CTY/010/C	2/CTY/010/THB	2/CTY/010/FB	2/CTY/010/IR	2/CTY/010/OR	2/CTY/010/ET
2/CTY/011	450	25	2/CTY/011/C	2/CTY/011/THB	2/CTY/011/FB	2/CTY/011/IR	2/CTY/011/OR	2/CTY/011/ET
2/CTY/012	600	25	2/CTY/012/C	2/CTY/012/THB	2/CTY/012/FB	2/CTY/012/IR	2/CTY/012/OR	2/CTY/012/ET