

N BOLTS M10

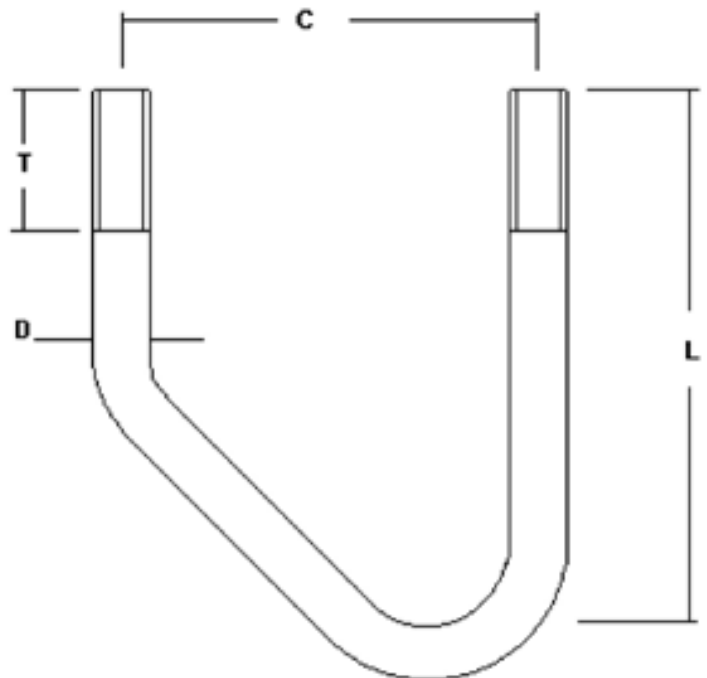
Mild Steel Bolt Grade 43A

Finish = Spun Galvanised to BS 7371

Each Supplied with 4 Full Nuts, 2 Flat Washers and 2 Spring Washers

For Stainless Steel, suffix the part number with SS e.g. 2/NB/026/SS

Part No.	C	L	D	T	Angle Size	Wt. Kg
2/NB/026	52	70	10	30	40 x 40	0.131
2/NB/022	57	70	10	30	45 x 45	0.136
2/NB/004	62	80	10	30	50 x 50	0.153
2/NB/005	73	90	10	30	60 x 60	0.161



N BOLTS M12 EQUAL ANGLE

MS = Mild Steel Bolt Grade 43A

HT = High Tensile Bolt Grade EN16T

Finish = Spun Galvanised to BS 7371

Each Supplied with 4 Full Nuts, 2 Flat Washers and 2 Spring Washers

For Stainless Steel, suffix the part number with SS e.g. 2/NB/12/045/SS

Part No. MS	Part No. HT	C	L	D	T	Angle Size	Wt. Kg	Series
-	2/NB/12/045	61	70	12	35	45 x 45	0.231	1000
-	2/NB/12/050	65	100	12	50	50 x 50	0.282	1000
-	2/NB/12/060	75	110	12	50	60 x 60	0.301	1000
-	2/NB/12/065	80	100	12	35	65 x 65	0.289	1000
-	2/NB/12/070	85	105	12	35	70 x 70	0.304	1000
-	2/NB/12/075	90	110	12	35	75 x 75	0.312	2000
-	2/NB/12/080	95	120	12	40	80 X 80	0.340	2000
-	2/NB/12/085	100	130	12	40	85 X 85	0.344	2000
-	2/NB/12/090	105	140	12	50	90 X 90	0.366	2000
-	2/NB/12/100	115	145	12	40	100 X 100	0.384	2000
2/NB/019	2/NB/12/115	130	165	12	50	4 1/2" X 4 1/2"	0.420	2000
-	2/NB/12/120	135	170	12	50	120 X 120	0.435	2000
-	2/NB/12/127	142	177	12	50	5" X 5"	0.458	2000
-	2/NB/12/130	145	180	12	50	130 X 130	0.446	2000
-	2/NB/12/140	155	190	12	50	140 X 140	0.479	3000
-	2/NB/12/150	165	200	12	50	150 X 150	0.491	3000
-	2/NB/12/152	170	200	12	50	6" X 6"	0.503	3000
-	2/NB/12/160	175	210	12	50	160 X 160	0.528	3000
2/NB/013	2/NB/12/200	213	260	12	50	200 X 200	0.615	4000
2/NB/025	2/NB/12/203	218	255	12	50	8" X 8"	0.609	4000
-	2/NB/12/250	265	300	12	50	250 X 250	0.735	5000

N BOLTS M12 UNEQUAL ANGLE

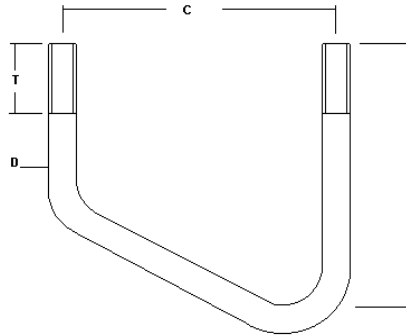
MS = Mild Steel Bolt Grade 43A

HT = High Tensile Bolt Grade EN16T

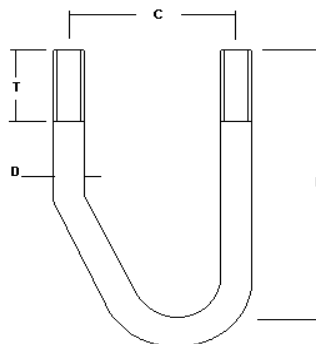
Finish = Spun Galvanised to BS 7371

Each Supplied with 4 Full Nuts, 2 Flat Washers and 2 Spring Washers

For Stainless Steel, suffix the part number with SS e.g. 2/NB/12/050/075/SS



Part No. MS	Part No. HT	C	L	D	T	Angle Size	Wt. Kg	Series
-	2/NB/12/050/075	90	100	12	50	50 x 75	0.299	2000
-	2/NB/12/065/100	115	115	12	50	65 x 100	0.337	2000
-	2/NB/12/075/100	115	125	12	50	75 x 100	0.346	2000
-	2/NB/12/075/125	140	125	12	50	75 x 125	0.377	2000



Part No. MS	Part No. HT	C	L	D	T	Angle Size	Wt. Kg	Series
2/NB/101	2/NB/12/075/050	65	125	12	50	75 x 50	0.317	1000
2/NB/102	2/NB/12/100/065	80	150	12	50	100 x 65	0.352	1000
-	2/NB/12/100/075	90	150	12	50	100 x 75	0.369	2000
-	2/NB/12/125/075	90	175	12	50	125 x 75	0.415	2000
2/NB/105	2/NB/12/150/075	90	200	12	50	150 x 75	0.462	2000

N BOLTS M16

MS = Mild Steel Bolt Grade 43A

HT = High Tensile Bolt Grade EN16T

Finish = Spun Galvanised to BS 7371

Each Supplied with 4 Full Nuts, 2 Flat Washers and 2 Spring Washers

For Stainless Steel, suffix the part number with SS e.g. 2/NB/16/070/SS

Part No. HT	C	L	D	T	Angle Size	Wt. Kg	Series
2/NB/16/070	90	130	16	60	70 x 70	0.586	1000
2/NB/16/075	95	135	16	60	75 x 75	0.616	2000
2/NB/16/080	100	140	16	60	80 x 80	0.640	2000
2/NB/16/085	105	145	16	60	85 x 85	0.659	2000
2/NB/16/090	110	150	16	60	90 x 90	0.688	2000
2/NB/16/100	120	160	16	60	100 x 100	0.733	2000
2/NB/16/120	140	180	16	60	120 x 120	0.795	2000
2/NB/16/150	170	210	16	60	150 x 150	0.903	3000
2/NB/16/200	220	260	16	60	200 x 200	1.101	4000
2/NB/16/250	270	310	16	60	250 x 250	1.323	5000
Part No. MS	C	L	D	T	Angle Size	Wt. Kg	Series
2/NB/053	105	125	16	50	75 x 75	0.616	2000
2/NB/055	115	135	16	50	85 x 85	0.659	2000

