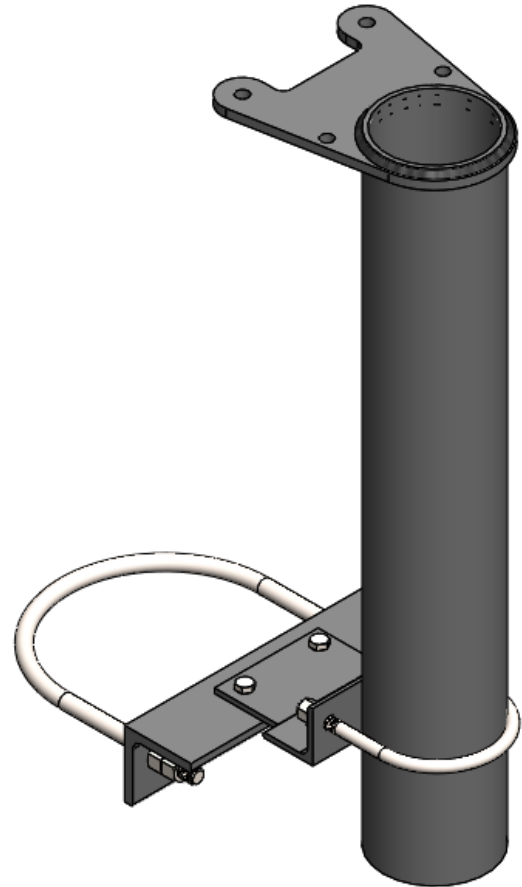
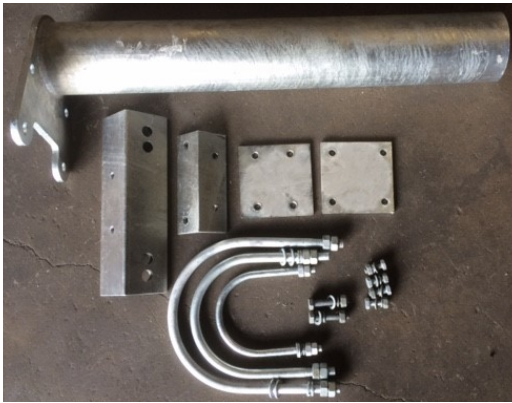


MONOPOLE DISH MOUNT

Material S355J2 BS EN 10025-2. Galvanized to BS EN ISO 1461

To suit 219.3 and 168mm diameter tubes.

Kit No.	Wt. Kg
5/MPM/P1	25.1



Part No.	Description	Wt Kg
3/MPM/101	Dish Pole	15.0
3/MPM/102	Dish Pole Angle	1.0
3/MPM/103	Dish Pole Angle	4.0
3/MPM/104	Dish Pole Plate A	1.0
3/MPM/105	Dish Pole Plate B	1.0