

# U BOLTS M10

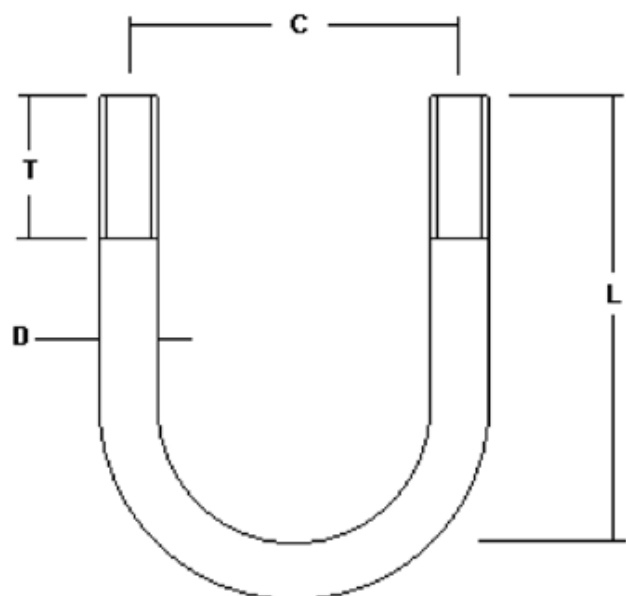
Mild Steel Bolt Grade 43A

Finish = Spun Galvanised to BS 7371

Each Supplied with 4 Full Nuts, 2 Flat Washers and 2 Spring Washers

For Stainless Steel, suffix the part number with SS e.g. 2/UB/010/SS

Part No.	C	L	D	T	Tube Size	Wt. Kg
20UB010	40	60	10	35	26.9	0.113
20UB003	46	60	10	28	33.7	0.120
20UB040	47	70	10	35	35	0.136
20UB004	54	73	10	32	42.4	0.143
20UB005	60	78	10	32	48.3	0.150
20UB006	74	90	10	32	60.3	0.172
20UB007	88	106	10	32	76.1	0.197
20UB008	100	120	10	32	88.9	0.217
20UB009	125	140	10	50	114.3	0.243



# U BOLTS M12

MS = Mild Steel Bolt Grade 43A

HT = High Tensile Bolt Grade EN16T

Finish = Spun Galvanised to BS 7371

Each Supplied with 4 Full Nuts, 2 Flat Washers and 2 Spring Washers

For Stainless Steel, suffix the part number with SS e.g. 2/UB/12/025/SS

Part No. MS	Part No. HT	C	L	D	T	Tube Size	Wt. Kg	Series
-	<b>20UB12025</b>	40	65	12	35	25	0.217	-
-	<b>20UB12033</b>	48	77	12	45	33.7	0.231	1000
-	<b>20UB12035</b>	50	80	12	45	35	0.239	1000
-	<b>20UB12040</b>	54	85	12	45	40	0.254	1000
-	<b>20UB12042</b>	57	86	12	45	42.4	0.255	1000
-	<b>20UB12045</b>	60	90	12	45	45	0.262	1000
<b>20UB/021</b>	<b>20UB12048</b>	63	92	12	45	48.3	0.272	1000
-	<b>20UB12048LL</b>	63	150	12	100	48.3	0.357	1000
-	<b>20UB12050</b>	65	100	12	50	50	0.286	1000
-	<b>20UB12055</b>	70	105	12	50	55	0.300	1000
-	<b>20UB12060</b>	75	104	12	45	60.3	0.302	1000
-	<b>20UB12060LL</b>	75	160	12	100	60.3	0.378	1000
-	<b>20UB12065</b>	79	110	12	45	65	0.313	1000
<b>20UB043</b>	<b>20UB12070</b>	84	115	12	45	70	0.322	1000
-	<b>20UB12076</b>	91	120	12	45	76.1	0.339	2000
-	<b>20UB12076LL</b>	91	176	12	100	76.1	0.423	2000
<b>20UB048</b>	<b>20UB12080</b>	95	125	12	45	80	0.346	2000
<b>20UB024</b>	<b>20UB12089</b>	103	132	12	45	88.9	0.360	2000
-	<b>20UB12089LL</b>	103	190	12	100	88.9	0.451	2000
-	<b>20UB12095</b>	110	145	12	50	95	0.394	2000
-	<b>20UB12100</b>	114	145	12	45	100	0.395	2000
-	<b>20UB12114</b>	129	158	12	45	114.3	0.423	2000
<b>2/UB/025/LL</b>	<b>2/UB/12/114/LL</b>	129	215	12	100	114.3	0.508	2000
-	<b>2/UB/12/120</b>	134	165	12	45	120	0.442	2000
-	<b>2/UB/12/130</b>	142	160	12	35	130	0.432	2000
-	<b>2/UB/12/135</b>	150	185	12	50	135	0.460	2000

**M12 U BOLTS CONTINUED ON THE NEXT PAGE**



# U BOLTS M12- CONTINUED

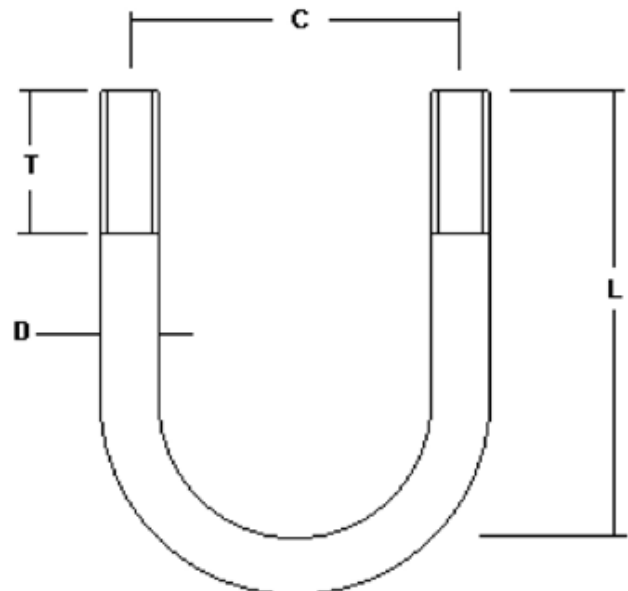
MS = Mild Steel Bolt Grade 43A

HT = High Tensile Bolt Grade EN16T

Finish = Spun Galvanised to BS 7371

Each Supplied with 4 Full Nuts, 2 Flat Washers and 2 Spring Washers

Part No.	Part No. HT	C	L	D	T	Tube Size	Wt. Kg	Series
-	<b>20UB12139</b>	154	183	12	45	139.7	0.483	3000
-	<b>20UB12139LL</b>	154	240	12	100	139.7	0.600	3000
-	<b>20UB12150</b>	165	190	12	40	150	0.500	3000
-	<b>20UB12168</b>	182	210	12	45	168.3	0.545	3000
-	<b>20UB12180</b>	195	220	12	50	180	0.608	3000
-	<b>20UB12193</b>	210	245	12	50	193.7	0.622	4000
-	<b>20UB12219</b>	232	263	12	50	219.1	0.684	4000



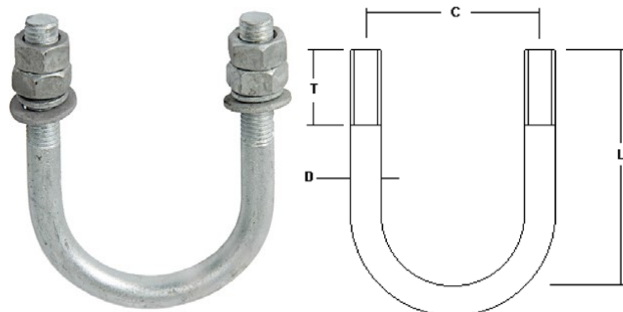
# U BOLTS M16

MS = Mild Steel Bolt Grade 43A

HT = High Tensile Bolt Grade EN16T

Finish = Spun Galvanised to BS 7371

Each Supplied with 4 Full Nuts, 2 Flat  
and 2 Spring Washers



For

Part No. MS	Part No. HT	C	L	D	T	Tube Size	Wt. Kg
20UB052	-	68	100	16	50	48.3	0.519
20UB064	-	70	100	16	50	50.0	0.525
20UB065	-	75	105	16	50	55.0	0.550
20UB053	20UB16060	80	110	16	50	60.3	0.564
20UB066	20UB16065	85	115	16	50	65.0	0.582
20UB067	-	90	120	16	50	70.0	0.610
-	20UB16076	96	126	16	50	76.1	0.630
20UB054LL	-	96	180	16	100	76.1	0.766
20UB068	-	100	130	16	50	80.0	0.642
20UB055	20UB16089	110	140	16	50	88.9	0.689
-	20UB16089LL	110	190	16	100	88.9	0.818
-	20UB16095	115	145	16	50	95.0	0.725
-	20UB16100	120	150	16	50	100.0	0.750
-	20UB16114	134	165	16	50	114.3	0.797
-	20UB16114LL	134	215	16	100	114.3	0.926
20UB061	-	140	170	16	50	120.0	0.745
20UB056LL	-	134	215	16	100	114.3	0.931
-	20UB16139	160	190	16	50	139.7	0.887
20UB057LL	-	160	240	16	100	139.7	1.032
-	20UB16150	170	200	16	50	150.0	1.003
20UB062LL	-	170	250	15	100	150.0	1.059
-	20UB16168	188	220	16	50	168.3	1.025
20UB058LL	-	188	270	15	100	168.3	1.152
-	20UB16193	214	245	16	50	193.7	1.096
20UB059LL	-	214	295	16	100	193.7	1.246
-	20UB16219	240	270	16	50	219.1	1.181
-	20UB16219LL	240	320	16	100	219.1	1.310

Stainless Ste

Was